

COMPOSITE DOORS

stylish and secure



eurocell

Elevate your entrance with

Dales Doors



First impressions matter. Enhance yours with Dales Doors

Welcome to the world of Dales Doors, where architectural beauty meets the breathtaking allure of the Derbyshire Dales. Inspired by the natural wonders that grace this picturesque landscape, our door collection captures the essence of the Dales in three distinct styles: Classic, Period and Contemporary.

Whether you seek a door that whispers timeless elegance, one that exudes grandeur and sophistication, or one that boldly embraces the sleek lines of modern living, our collection has the perfect match for you.

Made with precision and care, Dales Doors enhance your home's aesthetic appeal and provides security, durability, and exceptional performance, ensuring your peace of mind.

CONTENTS

DISCOVER

The Dales Doors collection overview..... 4-5

Door colours 6-9

Security and efficiency10

Why choose the Dales Doors collection.....11

DALES CLASSIC STYLE

Chatsworth 12-13

Bradbourne14

Brassington.....15

Cromford..... 16-17

Elton.....18

Hathersage.....19

Milldale20

Pilsley21

Thorpe22

Winster.....23

DALES PERIOD STYLE

Bretton 24-25

Ashbourne26

Hartington27

Litton.....28

Malham29

Middleton30

Middleton Half Glazed31

DALES CONTEMPORARY STYLE

Birchover 32-33

Buxton34

Chelmorton35

Newhaven36

Wirksworth37

DESIGN CHOICES

Frames..... 38-39

Door configuration options..... 40-41

Colours and frames 42-43

Glass options44

Glazing and Backing glass options45

Finishing touches 46-47

Maximum and minimum door sizes 48-49

Glazing options 50-51

Discover

the versatility of Dales Doors

Our door collection is thoughtfully divided into three styles: Classic, Period, and Contemporary. However, we believe true style knows no boundaries. Each door possesses the potential to transform any home, regardless of its architectural style.

With Dales Doors, customisation is key. We understand that personal taste varies, and a door's

character can be entirely reimagined through the power of choice. By selecting the perfect colour, glass design, and door furniture, you can effortlessly breathe new life into any style. A door designed with a period aesthetic can seamlessly transition into a contemporary masterpiece with the right elements. While a classic door can embrace a modern twist. The possibilities are endless.

CLASSIC STYLE



CHATSWORTH
PAGE 12-13



BRADBOURNE
PAGE 14



BRASSINGTON
PAGE 15



CROMFORD
PAGE 16-17



ELTON
PAGE 18



HATHERSAGE
PAGE 19



MILLDALE
PAGE 20



PILSLEY
PAGE 21



THORPE
PAGE 22



WINSTER
PAGE 23



PERIOD STYLE



BRETTON
PAGE 24-25



ASHBOURNE
PAGE 26



HARTINGTON
PAGE 27



LITTON
PAGE 28



MALHAM
PAGE 29



MIDDLETON
PAGE 30



MIDDLETON HALF GLAZED
PAGE 31

CONTEMPORARY STYLE



BIRCHOVER
PAGE 32-33



BUXTON
PAGE 34



CHELMORTON
PAGE 35



NEWHAVEN
PAGE 36



WIRKSWORTH
PAGE 37

DISCOVER



DISCOVER

Door colours

to welcome you home

Dales Doors offer an array of standard and premium colours to suit every taste. But that's not all – with our bespoke options, you can explore the classic RAL colour system, offering 213 shades. But which colour should you pick? Here are some things to consider when choosing your door colour.



The style and age of your property

Choose a colour that complements your property's architectural style and historical era. Classic neutrals work well for traditional homes, while bold hues can enhance modern designs, and natural wood colours and pastels suit country houses. If you have a terraced house, a splash of colour will help your home stand out.



Coordinate with your brick colour

Your door should harmonise with the brick or finish of your home. For example, dark blue, white, and grey complement red bricks. While bold colours such as black, vibrant red, and bright yellow contrast well with white houses.



Complimentary finishing touches

The colour and style of your doors' furniture can change the overall look of the door, so it's important to consider this when choosing them. Silver or chrome are a classic choice and pair perfectly with contemporary grey and black doors, brass adds a traditional feel to classic style doors when paired with reds, greens and blues, and a modern twist to pink doors while black furniture offers a more contemporary look.

10



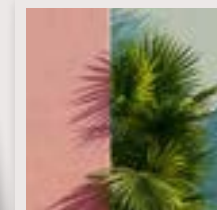
Embrace the trend for doorscaping

Doorscaping is an art that breathes life into your front door, creating an inviting and captivating entrance. Elevate yours with lush plants flanking the sides, hanging baskets overflowing with colourful blooms and seasonal wreaths* throughout the year. You can also add lanterns, lights, or decorative doormats to infuse character and charm.

What's your style?



A decorative knocker looks fantastic on a classic or period style door. Choose from two designs and a range of five finishes.



Add evergreen plants for year round colour



*Always take care to use suitable fixings and protection to avoid causing damage to your door.

Interior and exterior colour, a door of two halves

Choosing a colour for the interior of your door is just as important as the exterior. While you can have the same colour inside and out it's important to think about your interior décor, especially if your door opens into a living room. Being a neutral colour, white is the most popular choice as it tends to work with almost all colour schemes, however if you want to make a statement in a hallway using your door can be an ideal solution.

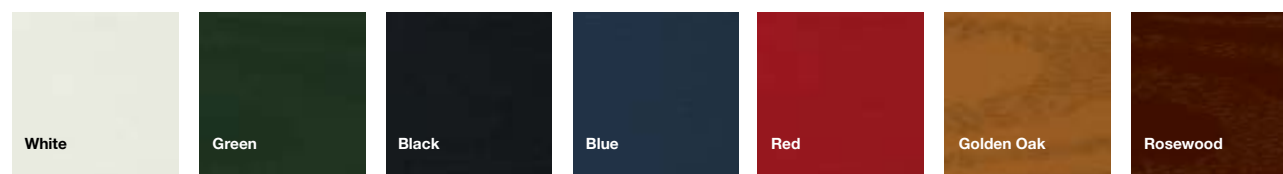


DISCOVER

Enhance the entrance to your home *with the perfect colour*

Choosing your new front or back door is the perfect opportunity to express your style and add curb appeal to your home. With our wide range of colours, there's something for every taste and style, from timeless classic, sleek and contemporary to bright and bold.

STANDARD COLOURS



Our standard colour range

brings you all the colours you would expect, white doors work with most types of property and black looks great whatever style of door you choose; red, green and blue add a traditional feel making them a perfect colour choice for any classic door style, while Golden Oak and Rosewood offer a natural wood effect

PREMIUM COLOURS

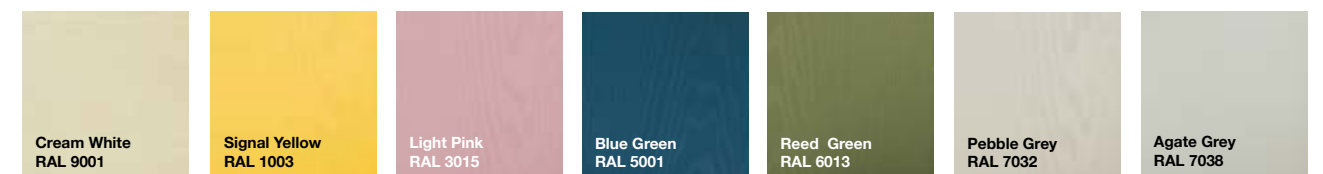
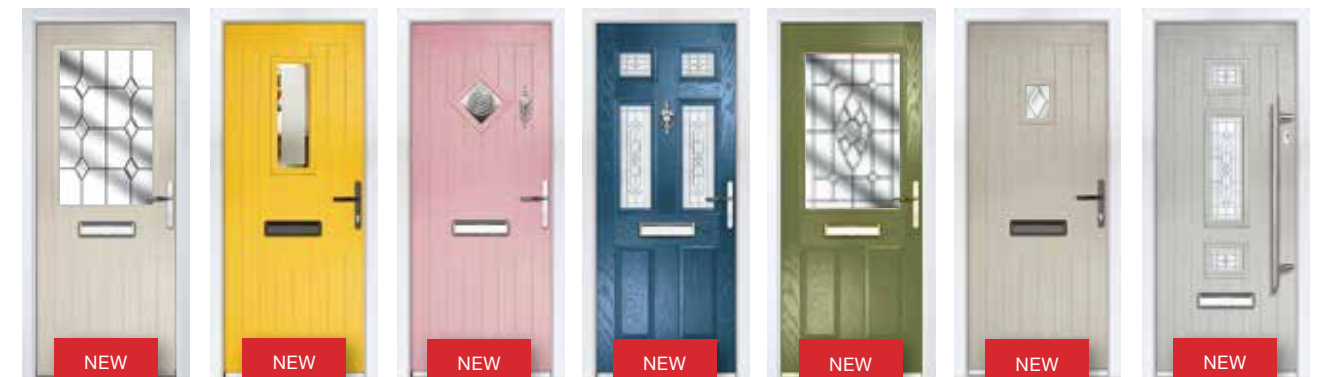


Our premium colour range

allows you to be a little bolder in your choice of colour, there's a shade of grey to suit every door style, bold colours if you're looking to make a statement or welcoming pastels for an understated neutral feel, plus with the addition of 7 new colours to the range there's even more ways to create your dream door.

New colours

To inspire you...



Your perfect colour

If you're looking for something a little more specific or unique, all our doors can be sprayed in any classic RAL colour, giving you a choice of over 200 colours, so you can be sure that whatever your perfect colour is we can create a door to suit your style.





DISCOVER

The Dales Doors Collection

the secure choice



The door to your home has an important job to do; protecting you, your family and your possessions from intruders and damage. It's one thing to look good on the outside, but when push comes to shove, can your door withstand the pressure?

With the Dales Doors collection, you don't have to worry. Not only are the door panels extremely resistant to damage, but they also feature locks with the latest technology that makes your door far more secure than most other doors available today.

All our composite doors have been rigorously tested against break-in attempts; earning them the approval of the Association of Chief Police Officers' Secured by Design scheme and the Police Preferred Specification PAS24:2016

£3000 MONEY-BACK GUARANTEE**

What's more, we're so sure of our ultra-secure multi-point locking mechanism, we offer a £3,000 money-back guarantee in the unlikely event of a break in, where the lock is the point of entry**. How's that for peace-of-mind?



Scan the QR code to register your guarantee.

Energy efficient

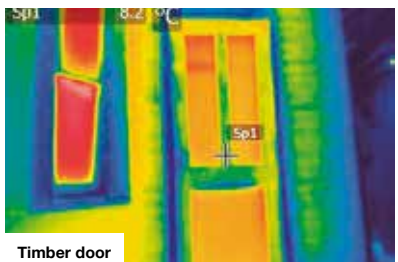
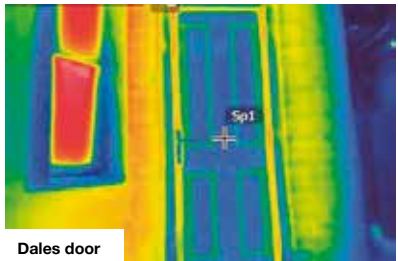
and sustainable too

With Dales Doors, you can bask in the warmth of thermally efficient design, ensuring a cosy home while saving on energy bills and reducing your carbon footprint. Our composite doors surpass timber, PVC, and steel doors in thermal efficiency, making them the obvious choice for your wallet and the planet.

U-values as low as 1.1

A U-value is a measurement that shows the overall transfer of heat through a material. A low number indicates that the material is well insulated, only allowing a small amount of heat to transfer through it.

The thermal images opposite demonstrate the difference in heat transference between a timber door and a Dales composite door. The Red, Yellow, and Green areas on the timber door show high levels of heat escaping, while the Blue areas on the Dales Door show that it's foam panel core doesn't allow heat to escape.

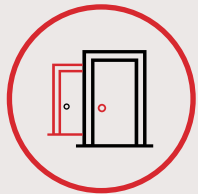


The Dales Doors Collection

discover the benefits

Behind every door's alluring beauty lies a carefully crafted blend of advanced engineering, design, and technology to deliver exceptional performance. Each door combines the highest levels of security, thermal efficiency, and low maintenance to protect what matters most.

Style choices



22 door styles

In classic, period and contemporary designs



Huge colour choice

7 standard, 16 premium
213 classic RAL colours



Accessible for all

Low level aluminium threshold
available for easy access

Safe and secure



3 star security and market leading hardware

5 hook locks* plus anti-pick, anti-bump, anti-drill
and anti-snap cylinders for complete security



High performance coating

4mm GRP skin, high
impact resistant and low
maintenance

Energy efficient



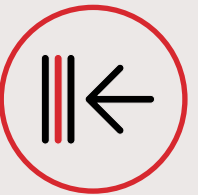
Insulated panels

Retain up to six times the
heat of a timber door



Weatherproof triple-seal frame

Keep drafts out and heat in



Thermal inserts

Provide greater thermal
efficiency and are made with
100% recycled UPVC

Peace of mind



Guarantee

on standard colour doors**



Guarantee

on glazing



Guarantee

on all hardware surfaces

Shown in Pebble Grey
with Glacier glass.

CLASSIC STYLE

Our best selling *classic style door*

CHATSWORTH

Embodying the essence of classic Georgian architecture, The Chatsworth boasts an air of sophistication that leaves a lasting impression on anyone who crosses its threshold. Its twin door glazing welcome the outside world in, bathing your hallway with an abundance of natural light. It features a harmonious combination of traditional panelling, delicate ornate accents, and a rich woodgrain effect enhanced by its elegant finish.

Our classic shaped handles and accessories in chrome or silver satin suit Chatsworth perfectly. ▼



Enhance your entrance by placing decorative planters on either side of the door and add a seasonal wreath for a welcoming pop of colour. ▲

Drawing inspiration from the rugged stone walls that line the Dales' countryside, our classic style doors exude timeless elegance. Their sturdy craftsmanship, ornate detailing, raised or recessed panels, and rich wood grain effect pay homage to the region's rich landscape. Simply choose a timeless colour and traditional door furniture to complete the classic look.

Personalise your door your way

Select from an array of sophisticated colours, like Agate Grey, Black, or Blue. Choose plain privacy glass or explore our decorative options for a door that reflects your unique style.



◀ **Shown in** Agate Grey with Spirit glass, Black with Kara glass, Anthracite Grey with Lattice glass. For more colour, glass and finishing touches options in this style see pages 42 - 46.



Shown in Slate Grey with Lattice glass.

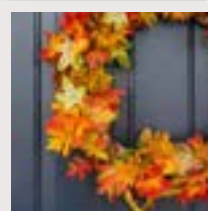
What's your *style?*



A silver effect door knocker and the simplicity of Lattice glass creates an elegantly stylish look.



Slate Grey



Add seasonal wreaths for a pop of colour

BRADBOURNE

The Bradbourne is a classic-style door that exudes charm. Its distinctive eyebrow-shaped twin door lights, reminiscent of the Georgian era, create a delightful and evocative look, welcoming you home with grace and sophistication.



The Bradbourne suits a range of colours. Try Cream White for a timeless look, Blue for a touch of serenity, or Royal Magenta for a bold statement. Then elevate its charm with ornate glass, complementing the eyebrow door lights and making it truly stand out.

◀ **Shown in** Cream with Bevel Diamond glass, Blue with Blue Diamond glass, Royal Magenta with Spirit glass. For more colour, glass and finishing touches options in this style see pages 42 - 46.

BRASSINGTON

The Brassington combines timeless sophistication with a touch of intrigue. It features four solid panels and eye-catching half-moon glazing at the top to ensure both privacy and ample natural light. This door creates a welcoming entrance, inside and out.

Have a spy hole fitted to your door if you'd like to check who's knocking before you open it. ▼



Shown in Black with Diamond Classic glass.



Add interest and personality with decorative glazing.

Shown in White with Gavalas glass, Red with Sunburst Geo Bar glass, Black with Murano Black glass. For more colour, glass and finishing touches options in this style see pages 42 - 46. ▶





Shown in Green with Lattice glass.

Versatile elegance

a door for every entrance

CROMFORD

The Cromford is a door that beautifully balances style and practicality. Its brilliant design, predominantly glazed on the top half, floods your interior with natural light. You can team it with plain privacy glass or opt for something more ornate to suit the style of your home.



Shown in Reed Green with Spirit glass, Black with Murano glass. For more colour, glass and finishing touches options in this style see pages 42 - 46.



Not limited to just the front, the Cromford makes an equally impressive statement as a back door, enhancing both entrances with its classic look.

What's your *style?*



The choice of glass can dramatically change the overall look and feel of your door, choose a traditional glass design to give your door a classic twist or a modern glass design to create a more contemporary look



Shown in Slate Grey with Simplicity Zinc glass



▲ A chrome letterbox perfectly complements this classic-style door.

ELTON

The Elton features two small solid panels at the bottom and an expansive glazed panel at the top – the largest glazed panel of all the doors in the Dales Collection. This clever design masterfully maximises natural light inside your hallway to brighten your home. Personalise your door with plain privacy glass for a sleek look, or opt for something more decorative to infuse your space with a touch of artistic flair.



▲ Shown in Pebble Grey with Bohemia glass, Chartwell Green with Reflections glass, Royal Magenta with Murano glass. For more colour, glass and finishing touches options in this style see pages 42 - 46.



Shown in Duck Egg Blue with Silvana glass.

What's your *style?*

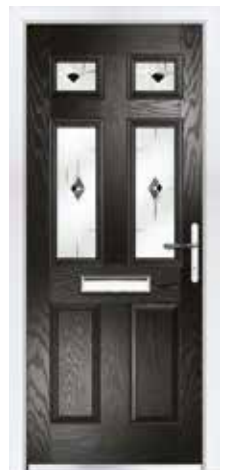


Colour-matched weather bars across the bottom of the door give a sleek look while protecting your home from rain.



Duck Egg Blue pairs beautifully with traditional red brick.

Shown in Pebble Grey with Diamond Classic glass, Black with Murano glass. For more colour, glass and finishing touches options in this style see pages 42 - 46.



HATHERSAGE

Embrace the colonial charm of the Hathersage door. Its six-panel design, featuring two solid panels at the base and four glazed panels, invites natural light into your home. While the cross members give the door a solid feel and an air of refinement.



Shown in Reed Green with Murano Green glass.

What's your *style?*



Choose from a wide range of glass styles to accentuate your elegant arch and design your door your way.

Reed Green



Add a tiled doorstep to enhance your entrance.

NEW

MILLDALE

The Milldale is a classic style door that harmoniously fuses traditional elegance with the current interior design trend for arches. It features two solid panels at the base and a graceful, full glass panel at the top, reminiscent of the Dales' sweeping landscapes.



Customise The Milldale to suit your tastes

Tailor this classic door by selecting the perfect colour and your Preferred glass and door furniture style. There are hundreds of possibilities, and the result is a door that complements your home beautifully.

◀ Shown in Moondust Grey with Spirit glass, Green with Silvaner glass, Royal Magenta with Royal Sparkle glass. For more colour, glass and finishing touches options in this style see pages 42 - 46.

NEW

PILSLEY

The Pilsley flawlessly blends traditional aesthetics with the beauty of the modern interior design trend for arches. It features two solid panels at the bottom and two arched glazed panels at the top. Choose from our range of decorative glass options to enhance the classic look.



▲ Shown in Black with Murano glass.

Shown in Black with Spirit glass.



Shown in Rosewood with Lattice glass, Chartwell Green with Murano Green glass, Duck Egg Blue with Bevel Diamond glass, Anthracite Grey with Spirit glass. For more colour, glass and finishing touches options in this style see pages 42 - 46.

▶



Make a statement *with colour*



Shown in Blue Green
with Lattice glass.

What's your *style?*



Go bold and make a statement
with Signal Yellow.



Add pots of matching
colour flowers to
complete the look.



Signal Yellow



Choose solid top panels or fill them with glass to
let in a touch of light.

THORPE

Embrace refinement, strength, and elegance with the Thorpe door. Its distinguished six-panel design provides a large area to make a bold statement with your chosen colour, whether that's a subdued Black or a vibrant Red.

Shown in Anthracite Grey with Eos glass, Chartwell Green with Diamond Classic glass, Red with Lattice glass. For more colour, glass and finishing touches options in this style see pages 42 - 46.



Shown in Royal Magenta
with Gavalas glass.



Shown in Black with Spirit glass, Duck Egg Blue with Silvaner glass, French Blue with Spirit glass. For more colour, glass and finishing touches options in this style see pages 42 - 46.

Make a statement *with glazing*

WINSTER

The Winster Door is a masterful combination of sophistication and character. Two solid panels at the base exude strength, while the captivating half-moon and mid-panel glazing at the top infuse your entrance with charm. Opt for decorative glazing to create a statement piece that sets your home apart.

PERIOD STYLE

Shown in Light Pink with Diamond Classic glass.

What's your *style?*



Brass furniture beautifully complements a Light Pink door.

Light Pink



Add plants in pots for a welcoming touch.

For those seeking a touch of nostalgia, our period doors transport you to a bygone era. Inspired by the charming cottages and historic buildings nestled amidst the rolling hills of the Derbyshire Dales, these doors harmoniously blend tradition with modern functionality.

Our best selling *period style door*

BRETTON

Step into the charm of the Bretton, a period-style door that ingeniously marries classic cottage aesthetics with modern composite technology. Its vertical boarding exudes a timeless allure reminiscent of rustic cottages dotting the countryside. The oblong-shaped glass offers both privacy and a chance to make a bold statement with your door.

Cast iron effect and chrome handles and letterboxes suit the period style of The Bretton perfectly.



Shown in Chartwell Green with Classic Diamond glass.

Customise the Bretton your way

Select from an array of stunning colours, like Cream White, Signal Yellow, Duck Egg Blue or Anthracite Grey. Choose plain privacy glass or explore our range of decorative options for a door that reflects your home and style.



Shown in Cream White with Bevel Diamond glass, Signal Yellow with Glacier glass, Duck Egg Blue with Spirit glass, Black with Lattice glass. For more colour, glass and finishing touches options in this style see pages 42 - 46.



Shown in Cream White with Geo Bar glass.

NEW

ASHBOURNE

Discover the Ashbourne, a door that artfully captures the essence of the Dale's picturesque landscape. With vertical boarding, it embodies the rustic elegance of a traditional farmhouse nestled amidst the rolling hills. And the square four-paned glass top panel welcomes daylight into your home.

Shown in Moondust Grey with Satin glass, Chartwell Green with Geo Bar glass, Royal Magenta with Satin glass. For more colour, glass and finishing touches options in this style see pages 42 - 46. ▶



The Hartington suits a range of colours, from soft, creamy shades to cool greys and rich, dark hues. Effortlessly harmonising with your home's style.



▲
Shown in Black with Simplicity Zinc glass, Chartwell Green and Reflections glass, Slate Grey with Glacier glass. For more colour, glass and finishing touches options in this style see pages 42 - 46.



Shown in Red with Havana glass

HARTINGTON

The Hartington seamlessly blends modern style with the period charm of a 1930s design. It's arched top glazing, in line with the latest interior design trends, adds a touch of sophistication. While the triple vertical panels have a traditional and imposing look.



Shown in Anthracite Grey with standard glass.

LITTON

The Litton combines the charm of Art Deco style with a contemporary edge, featuring vertical boarding and three quaint rectangular glazed panels. This versatile door complements both urban contemporary residences and rural period homes, depending on your choice of colour, door furniture and glass.



Shown in Duck egg Blue with Lattice glass.



Shown in Pebble Grey with standard glass.

NEW

MALHAM

The Malham is a period-style door that embraces the quintessential charm of cottage living. Its vertical panel design and small glazed panel add a touch of rustic elegance to any entrance. It's equally at home with bold, dark colours as with more subtle shades.

White is a popular choice for the interior of a door as it complements the décor of most homes. ▼



The Malham suits a range of colours, from rich dark hues to warm wood effects and more subtle shades. Effortlessly harmonising with your home's style.



▲ Shown in Black with Glacier glass, Golden Oak with Silvana glass, Pebble Grey with Kara glass. For more colour, glass and finishing touches options in this style see pages 42 - 46.

Shown in Chartwell Green with Glacier glass, Moondust Grey with Mene glass, Rosewood with Bevel Diamond glass, Slate Grey with Kara glass. For more colour, glass and finishing touches options in this style see pages 42 - 46.





Shown in Agate Grey with Bullseye glass.

One door

Two glazing options

MIDDLETON

The Middleton embraces the seamless blend of a secure composite door with country charm. Vertical panel detail creates an authentic cottage aesthetic, while a distinctive diamond-shaped window adds captivating allure.

▲
Shown in Light Pink with Bullseye glass, Black with Kara glass. For more colour, glass and finishing touches options in this style see pages 42 - 46.

NEW

MIDDLETON HALF GLAZED

The Middleton, with a half-glazed top panel, is an ideal choice for those seeking the best of both worlds – the captivating aesthetics of a cottage-style door with the added benefit of abundant natural light. Instead of the small diamond-shaped glass, there's a large square glazed panel at the top of the door.

Shown in Golden Oak with Kara glass. ▼



Shown in Cream White with Bevel Diamond glass, Chartwell Green with Glacier glass, Anthracite Grey with Eos glass, Duck Egg Blue with Lattice glass. For more colour, glass and finishing touches options in this style see pages 42 - 46.

►



CONTEMPORARY STYLE

Shown in Anthracite
Grey with Glacier
glass.

10

Inspired by the dynamic energy
of the Derbyshire Dales, our
contemporary doors exude
modern sophistication.
Their sleek lines and
minimalistic designs captivate,
complementing any home with a
touch of elegance.

Our best selling

contemporary style door

BIRCHOVER

The Birchover captures the essence of contemporary European design. Its in-line slim glazing panels, exclusively offered by Eurocell, create a modern and sophisticated look while allowing ample natural light to enter your hallway.



Shown in Blue Green with Satin glass. ▼



Tailor the Birchover to reflect your style

There are so many ways to personalise your door. Choose your colour, from bold hues to subtle shades. Select from various glass designs. Take your pick from lever, pull or bar handles. And finally, choose your finish. Opt for chrome or satin, or go for gold for a traditional twist.

Shown in Black with Mene glass, Moondust Grey with Rhea glass, Agate Grey with Diamond Classic glass.
For more colour, glass and finishing touches options in this style see pages 42 - 46.





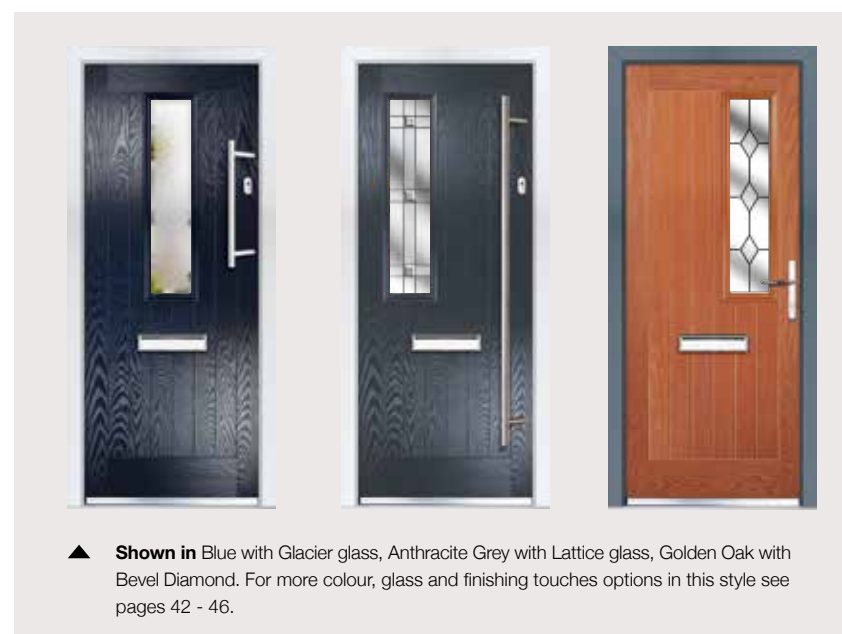
Three glass positions

one stylish door

NEW

BUXTON

The vertical panel design of the Buxton door exudes contemporary styling, while the slim glass panel adds a touch of charm. The beauty of The Buxton lies in your hands, with the freedom to place the glass panel in the centre, left, or right, depending on the door's opening direction and your preference.



▲ **Shown in** Blue with Glacier glass, Anthracite Grey with Lattice glass, Golden Oak with Bevel Diamond. For more colour, glass and finishing touches options in this style see pages 42 - 46.



What's your

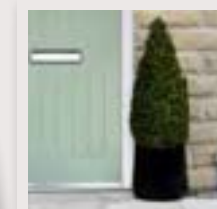
style?



The Sunburst glazing frame looks stunning on this door.



Chartwell Green

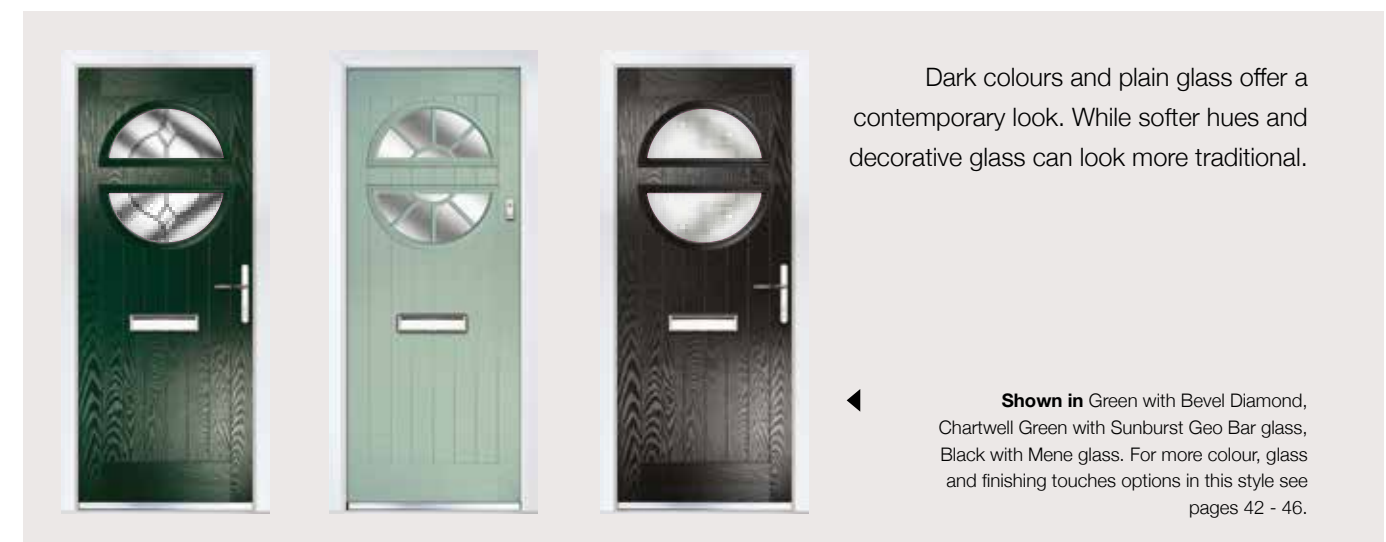


A small pot plant by the door adds a warm and inviting welcome.

▲ **Shown in** Black with Murano glass.

CHELMORTON

The distinctive Chelmorton door has a unique design featuring double half-moon glazing, providing charm and versatility. Seamlessly switch between traditional or contemporary aesthetics simply by choosing the right door colour and glazing style.



Dark colours and plain glass offer a contemporary look. While softer hues and decorative glass can look more traditional.

◀ **Shown in** Green with Bevel Diamond, Chartwell Green with Sunburst Geo Bar glass, Black with Mene glass. For more colour, glass and finishing touches options in this style see pages 42 - 46.



Shown in Agate Grey
with Satin glass.

Glazed or solid

your door, your way

NEWHAVEN

The Newhaven is a door where tradition meets contemporary design. Horizontal detail adds unique character, while a long bar handle complements the door's distinctive style. Although a pull or lever handle works equally as well for a minimalist look. The Newhaven is ideal for both cottage-style and modern contemporary homes.

Choose from three style-options

The Newhaven gives you the freedom to have a glass panel on the left or right side, depending on the opening direction. Or opt for a solid door for total privacy.

Shown in Agate Grey with Reflections glass, Moondust Grey with Murano glass, Golden Oak. For more colour, glass and finishing touches options in this style see pages 42 - 46.



Shown in Moondust Grey with Bevel Diamond glass, Slate Grey with Lattice glass, Golden Oak with Glacier glass. For more colour, glass and finishing touches options in this style see pages 42 - 46.



Shown in Black
with Mene glass.

WIRKSWORTH

The Wirksworth door is a contemporary take on traditional aesthetics, making it perfect for cottage-style or new build homes. The vertical detail offers stunning looks and features a distinctive sequence of quad glazing available in a range of designs.

DESIGN CHOICES

Frame your *entrance*

Discover the Dales Collection of door side panels, where style meets practicality to elevate your entrance and let more natural light flood your interior. These panels effortlessly complement any door style. Allowing you to personalise your entrance to perfection and create a warm and inviting atmosphere inside your home.

Choose from full height glass side panels for an open feel or a solid glass combination to balance privacy and sophistication. Half panels and top panels offer additional design possibilities. Panels can be placed on one or both sides or at the top, giving you the freedom to transform your doorway and enhance your home's curb appeal.

SIDE PANEL AND TOP LIGHT OPTIONS



Full height side panel
including mid-rail



Full height side panel



Full GRP composite
side panel

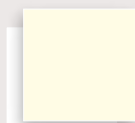


Flag light



Fan light

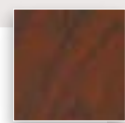
FRAME COLOUR OPTIONS



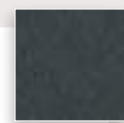
Eurocell White
White interior



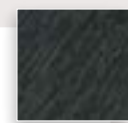
Golden Oak
White interior



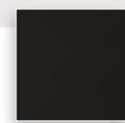
Rosewood
White interior



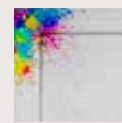
Slate Grey
White interior



Anthracite Grey
White interior



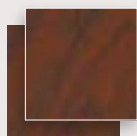
Black Ash
White interior



**Available in
any classic
RAL**



Golden Oak
Both sides



Rosewood
Both sides



Shown in Agate Grey with Satin glass.

DESIGN CHOICES

How to design *your perfect door*

Creating your new door is simple. The first step is to choose a door that fits your style. Then pick your perfect colour, add glazing if required, and then add your finishing touches. The following pages take you through all the options available to create your perfect door.



DESIGN YOUR DOOR AT:
designyourdoor.co.uk

Scan me
and start designing
your dream door.



Step *one* Choose your door

CLASSIC STYLE



CHATSWORTH
PAGE 12-13



BRADBOURNE
PAGE 14



BRASSINGTON
PAGE 15



CROMFORD
PAGE 16-17



ELTON
PAGE 18



HATHERSAGE
PAGE 19



MILLDALE
PAGE 20



PILSLEY
PAGE 21



THORPE
PAGE 22



WINSTER
PAGE 23

PERIOD STYLE



BRETTON
PAGE 24-25



ASHBOURNE
PAGE 26



HARTINGTON
PAGE 27



LITTON
PAGE 28



MALHAM
PAGE 29



MIDDLETON
PAGE 30



**MIDDLETON
HALF GLAZED**
PAGE 31

CONTEMPORARY STYLE



BIRCHOVER
PAGE 32-33



BUXTON
PAGE 34



CHELMORTON
PAGE 35



NEWHAVEN
PAGE 36



WIRKSWORTH
PAGE 37

DESIGN CHOICES

Step *Two* Choose your colour

All doors come with White internal colour as standard. However you can choose to have colour on both sides if that's your style choice.

STANDARD COLOURS



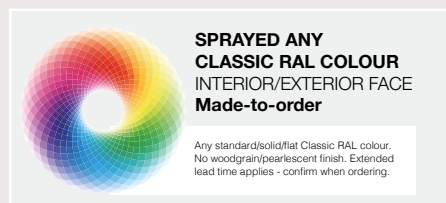
PREMIUM COLOURS



Can't see your perfect colour?

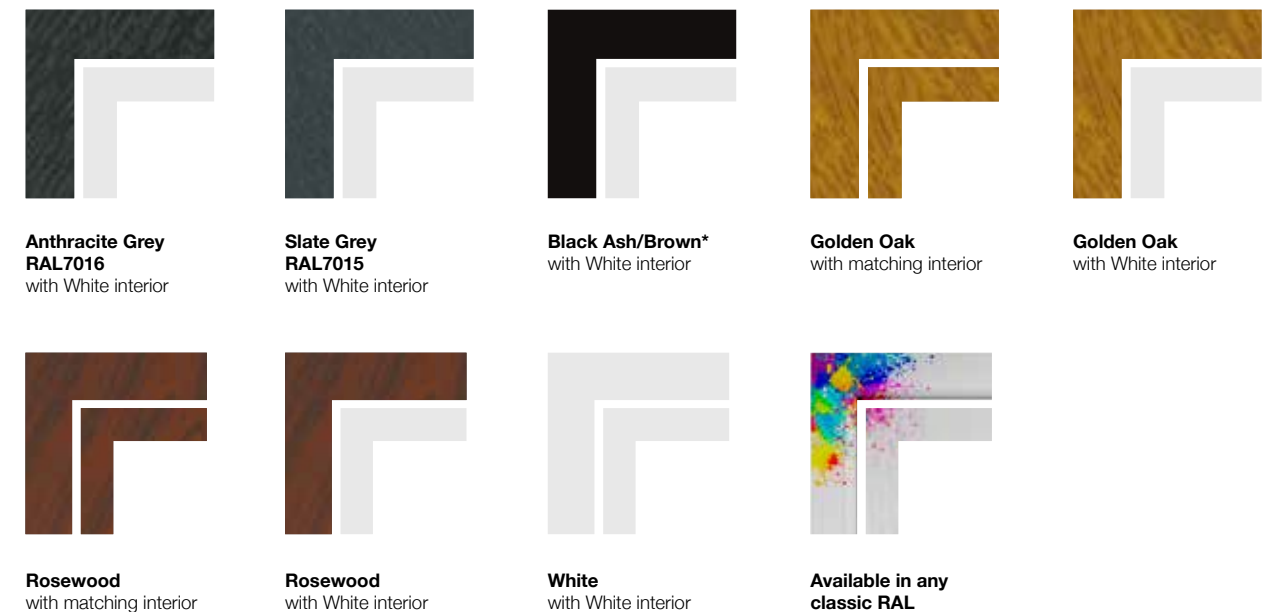
Don't worry! All our doors can be sprayed in any classic RAL* colour

*additional cost and lead times apply

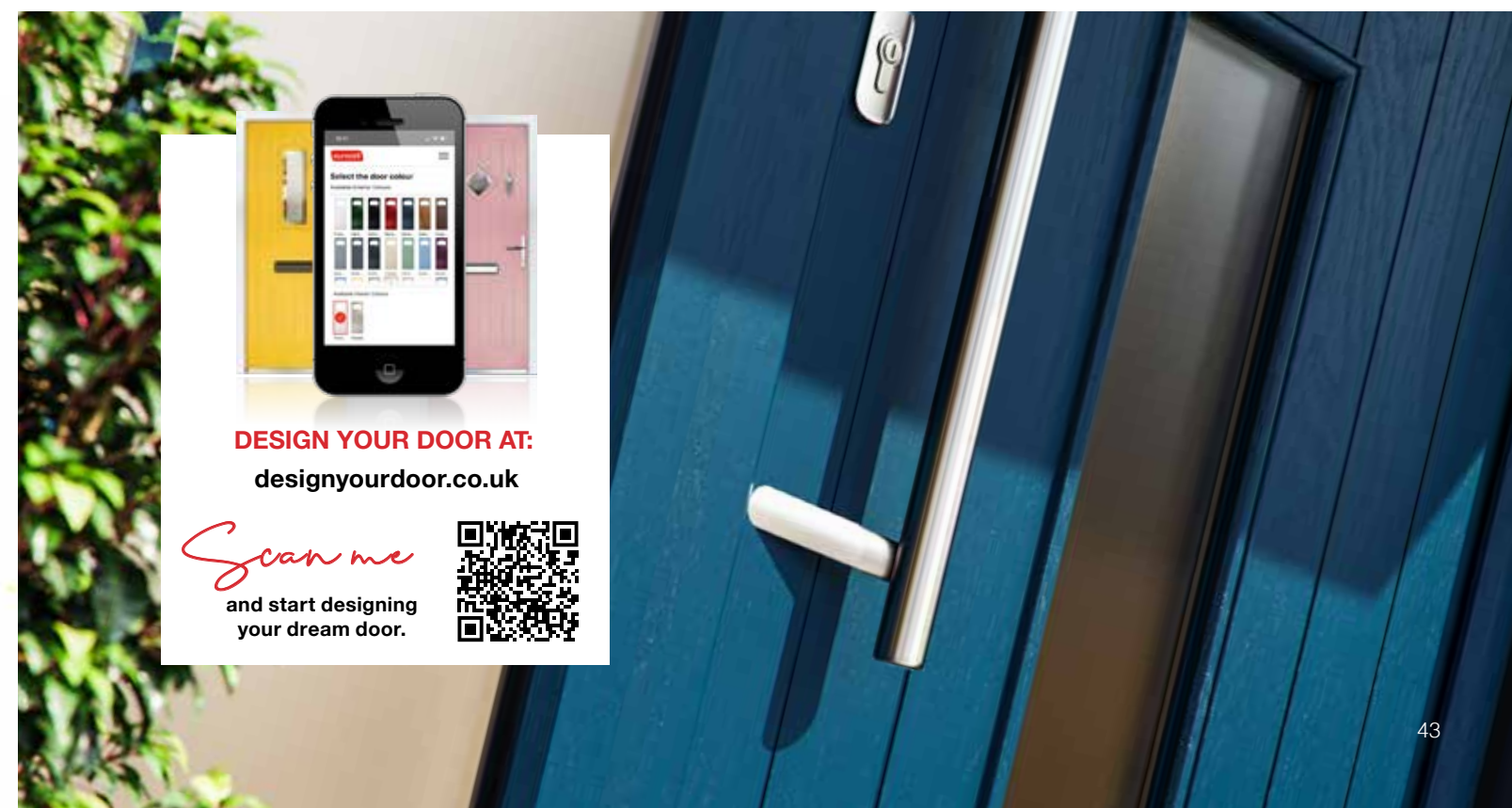


Step *Three* Choose your frame colour

Frames can be coloured both sides on request and can also be sprayed in any classic RAL colour with either a smooth or foiled finish.



* The foiled Black Ash/Brown frame may appear lighter than the black door in direct sunlight



DESIGN CHOICES

Step *four* Choose your glass

Beauty that shines through

You can choose from bold half-glazing, through to contemporary arches and traditional glazing infused with decorative picture art. From traditional designs to abstract geometric shapes and colourful glass options, we're sure to have a design for you. Our wide range of glazing options enables you to add the finishing touch to your door and complement your home. All of our glass designs are made using the highest quality materials, so glass colours will remain bright and vibrant for years to come. Manufactured using traditional techniques and finished by hand, our glass options offer the best possible finish.

Triple-glazed units

We offer an extensive range of triple-glazed glass in many stunning designs including some Gold and Silver lead options. Constructed using hand-cut bevels and textured glass pieces, triple-glazed units are beautiful additions to any door design. What's more, they offer excellent thermal and sound insulation properties, as well as providing extra security thanks to the additional strength.

GLAZING OPTIONS

5 AS LITTLE AS
DAYS
LEAD TIME

If you choose a door that doesn't require a top or sidelight, we'll deliver it within 5-10 days. This includes doors with triple glazed units. All glass units have clear glass on the outside with your choice of backing glass in the centre as shown in the diagram below. Backing glass options are not available on triple glazed units.

Glass configuration



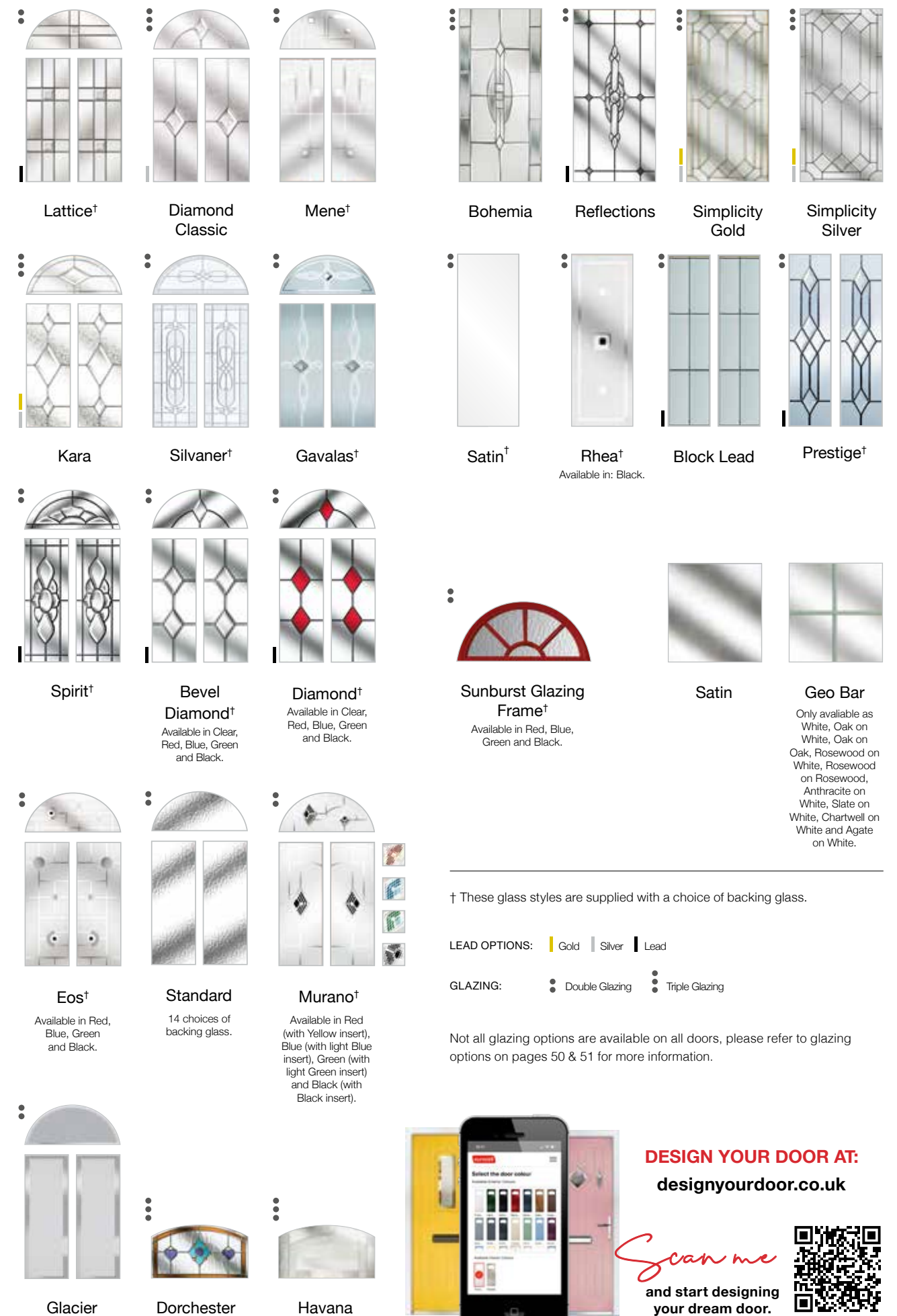
Creating *privacy*

Many of our glass designs can be specified with different backing glass as well as clear, offering varying levels of obscurity. Choosing the right backing glass can help increase the level of privacy your door offers, as well as match glass elsewhere in your property.

BACKING GLASS OPTIONS



© Images reproduced by permission of Pilkington plc



† These glass styles are supplied with a choice of backing glass.

LEAD OPTIONS: Gold Silver Lead

GLAZING: Double Glazing Triple Glazing

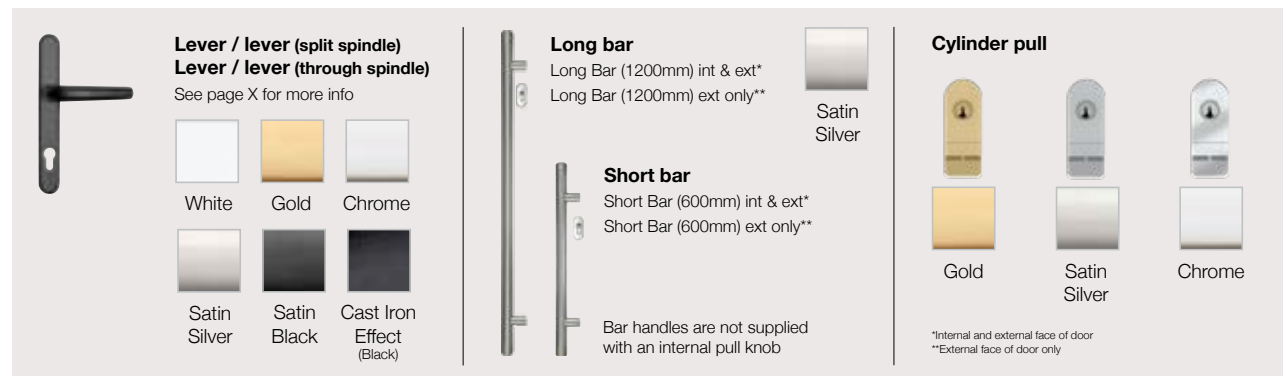
Not all glazing options are available on all doors, please refer to glazing options on pages 50 & 51 for more information.



DESIGN CHOICES

Step *five* Choose your finishing touches

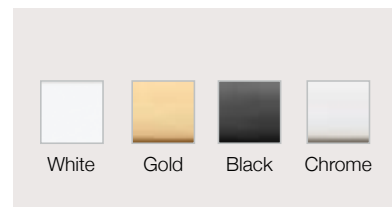
//HANDLES AND BARS



//LETTERBOX



//HINGES



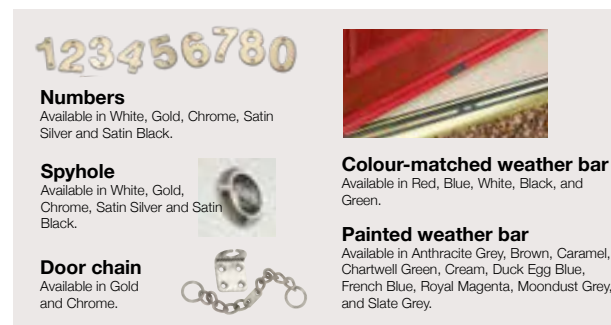
//LOCK



//KNOCKERS



//OTHER OPTIONS



//CILL OPTIONS

If required:	Size	Length	Size	Length
Available in White, Oak, Rosewood, Anthracite Grey, Slate Grey and Black ASH.	85mm	1100mm	150mm	2100mm
	85mm	2100mm	180mm	1100mm
	150mm	1100mm	180mm	2100mm

Please note:
If a cill option is chosen a metal Part M compliant threshold will be supplied.

//FRAME EXTENSIONS

If required:	Size	Length
White, Oak, Rosewood, Anthracite Grey and Slate Grey.	15mm	1100mm
	15mm	2100mm
	25mm	1100mm
	25mm	2100mm
	50mm	1100mm
	50mm	2100mm

Note: All Chrome, Gold and Satin Silver handles, knockers and letterboxes are stainless steel.

Don't forget to

complete the look

COMPOSITE SIDELIGHTS

For homes with larger openings, we offer a range of sidelight options to complement your door.



Design your
perfect door at...
designyourdoor.co.uk



Scan me
and start designing
your dream door.



DESIGN CHOICES

MINIMUM & MAXIMUM DOOR SIZES

CHART A		STANDARD LOCK DOORS								CYLINDER PULL LOCK DOORS							
		THE BIRCHOVER, THE BUXTON, THE BRASSINGTON, THE BRETTON, THE CHELMORTON, THE LITTON, THE MALHAM, THE MIDDLETON, THE THORPE (GLAZED/SOLID), THE WIRKSWORTH								THE BIRCHOVER, THE BRETTON, THE LITTON, THE MALHAM, THE MIDDLETON (GLAZED/SOLID)							
		Slim Frame				Standard Frame				Slim Frame				Standard Frame			
		Width		Height		Width		Height		Width		Height		Width		Height	
		Min	Max	Min	Max	Min	Max	Min	Max	Min	Max	Min	Max	Min	Max	Min	Max
Aluminium Threshold	Part M	800	1003	1930	2078	830	1033	1945	2093	810	1003	1930	2078	840	1033	1945	2093
	Low	800	1003	1930	2078	830	1033	1945	2093	810	1003	1930	2078	840	1033	1945	2093
	Open out	800	1003	1925	2076	830	1012	1940	2088	810	1003	1925	2076	840	1012	1940	2088
PVC-U Threshold	Low	800	1003	1955	2103	830	1033	1955	2118	810	1003	1955	2103	840	1033	1955	2118
	Standard	800	1003	1970	2118	830	1033	1970	2133	810	1003	1970	2118	840	1033	1970	2133

CHART B		STANDARD LOCK DOORS								CYLINDER PULL LOCK DOORS							
		THE ASHBOURNE, THE BRADBOURNE, THE CHATSWORTH, THE CROMFORD, THE HATHERSAGE, THE MIDDLETON HALF GLAZED, THE MILLDALE, THE NEWHAVEN (GLASS CENTRE/SOLID), THE PILSLEY, THE WINSTER								THE BRASSINGTON, THE NEWHAVEN (GLASS CENTRE/SOLID), THE THORPE (GLAZED/SOLID)							
		Slim Frame				Standard Frame				Slim Frame				Standard Frame			
		Width		Height		Width		Height		Width		Height		Width		Height	
		Min	Max	Min	Max	Min	Max	Min	Max	Min	Max	Min	Max	Min	Max	Min	Max
Aluminium Threshold	Part M	835	1003	1930	2078	865	1033	1945	2093	840	1003	1930	2078	870	1033	1945	2093
	Low	835	1003	1930	2078	865	1033	1945	2093	840	1003	1930	2078	870	1033	1945	2093
	Open out	835	1003	1925	2076	865	1012	1940	2088	840	1003	1925	2076	870	1012	1940	2088
PVC-U Threshold	Low	835	1003	1955	2103	865	1033	1955	2118	840	1003	1955	2103	870	1033	1955	2118
	Standard	835	1003	1970	2118	865	1033	1970	2133	840	1003	1970	2118	870	1033	1970	2133



CHART C		STANDARD LOCK DOORS								CYLINDER PULL LOCK DOORS							
		THE ELTON, THE HARTINGTON (GLAZED/SOLID)								THE ASHBOURNE, THE BRADBOURNE, THE CHELMORTON, THE CHATSWORTH, THE CROMFORD, THE ELTON, THE HARTNGTON (GLAZED/SOLID), THE HATHERSAGE, THE MIDDLETON HALF GLAZED, THE MILLDALE, THE PILSLEY, THE WINSTER, THE WIRKSWORTH							
		Slim Frame				Standard Frame				Slim Frame				Standard Frame			
		Width		Height		Width		Height		Width		Height		Width		Height	
		Min	Max	Min	Max	Min	Max	Min	Max	Min	Max	Min	Max	Min	Max	Min	Max
Aluminium Threshold	Part M	853	1003	1930	2078	883	1033	1945	2093	875	1003	1930	2078	905	1033	1945	2093
	Low	853	1003	1930	2078	883	1033	1945	2093	875	1003	1930	2078	905	1033	1945	2093
	Open out	853	1003	1925	2076	883	1012	1940	2088	875	1003	1925	2076	905	1012	1940	2088
PVC-U Threshold	Low	853	1003	1955	2103	883	1033	1955	2118	875	1003	1955	2103	905	1033	1955	2118
	Standard	853	1003	1970	2118	883	1033	1970	2133	875	1003	1970	2118	905	1033	1970	2133

CHART D		STANDARD LOCK DOORS								CYLINDER PULL LOCK DOORS							
		THE NEWHAVEN (GLASS LEFT/RIGHT)								THE NEWHAVEN (GLASS LEFT/RIGHT)							
		Slim Frame				Standard Frame				Slim Frame				Standard Frame			
		Width		Height		Width		Height		Width		Height		Width		Height	
		Min	Max	Min	Max	Min	Max	Min	Max	Min	Max	Min	Max	Min	Max	Min	Max
Aluminium Threshold	Part M	855	1003	1930	2078	885	1033	1945	2093	890	1003	1930	2078	920	1033	1945	2093
	Low	855	1003	1930	2078	885	1033	1945	2093	890	1003	1930	2078	920	1033	1945	2093
	Open out	855	1003	1925	2076	885	1012	1940	2088	890	1003	1925	2076	920	1012	1940	2088
PVC-U Threshold	Low	855	1003	1955	2103	885	1033	1955	2118	890	1003	1955	2103	920	1033	1955	2118
	Standard	855	1003	1970	2118	885	1033	1970	2133	890	1003	1970	2118	920	1033	1970	2133

SIDE PANELS		THE BRADBOURNE, THE CHATSWORTH, THE NEWHAVEN							
		Slim Frame				Standard Frame			
		Width		Height		Width		Height	
		Min	Max	Min	Max	Min	Max	Min	Max
Dimensions		420	456	1936	2119	450	486	1966	2149

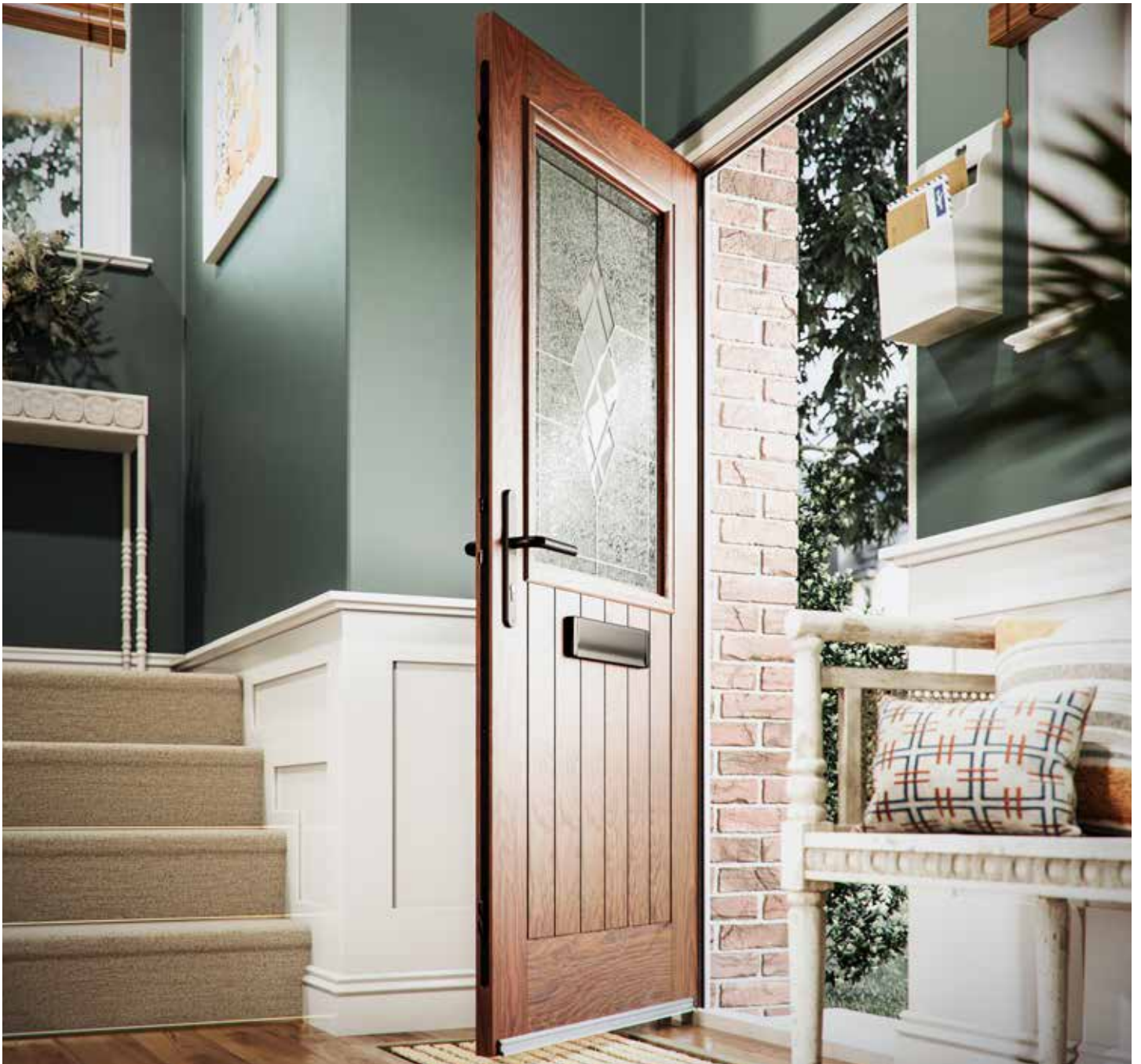


DESIGN CHOICES

GLAZING OPTIONS

Door Style	U-Value	Bevel Diamond	Diamond	Diamond Classic	Block Lead	Bohemia	Dorchester	Eos	Gavalas	Glacier	Havana	Kara	Lattice
Ashbourne	1.2												
Buxton	1.2	Y	Y	Y				Y		Y			Y
Birchover	1.3	Y	Y	Y				Y		Y			Y
Bradbourne	1.4	Y	Y	Y	Y			Y					Y
Brassington	1.2	Y	Y	Y				Y	Y	Y		Y	Y
Bretton	1.2	Y	Y	Y				Y		Y		Y	Y
Chatsworth	1.4	Y	Y	Y	Y			Y		Y		Y	Y
Chelmorton	1.2	Y	Y	Y				Y	Y	Y		Y	Y
Cromford	1.4	Y	Y					Y	Y	Y		Y	Y
Elton	1.4					Y							
Hartington	1.2						Y			Y	Y		
Hathersage	1.3	Y	Y	Y				Y		Y		Y	Y
Litton	1.3	Y	Y	Y				Y		Y		Y	Y
Malham	1.1	Y	Y	Y						Y			
Middleton	1.1							Y					Y
Middleton Half Glazed	1.4	Y	Y					Y		Y		Y	Y
Milldale	1.4	Y	Y						Y			Y	
Newhaven	1.2									Y			
Pilsley	1.4	Y	Y	Y	Y								Y
Thorpe	1.2	Y	Y	Y				Y		Y		Y	Y
Winstar	1.3	Y	Y	Y				Y	Y	Y		Y	Y
Wirksworth	1.3	Y	Y	Y				Y		Y		Y	Y

Mene	Murano	Prestige	Reflections	Rhea	Satin	Silvaner	Simplicity	Spirit	Laminated	Geo Bar Fretted
					Y				Y	
Y	Y				Y	Y		Y	Y	
Y	Y			Y	Y	Y		Y	Y	
Y	Y				Y	Y		Y	Y	
Y	Y	Y			Y	Y		Y	Y	Y
Y	Y				Y	Y		Y	Y	
Y	Y	Y			Y	Y		Y	Y	
Y	Y	Y			Y	Y		Y	Y	Y
Y	Y				Y	Y		Y	Y	
	Y		Y		Y		Y		Y	
			Y		Y		Y		Y	
Y	Y				Y	Y		Y	Y	
Y	Y				Y	Y		Y	Y	
					Y	Y		Y	Y	
Y	Y				Y		Y		Y	
Y	Y				Y	Y		Y	Y	
	Y		Y		Y				Y	
	Y				Y			Y	Y	
Y	Y				Y	Y		Y	Y	
Y	Y				Y	Y		Y	Y	
Y	Y				Y	Y		Y	Y	



eurocell.co.uk



Product specification is subject to change without notification.
Please also note that colours shown are illustrative only, as the printing process does not allow 100% accurate colours to be reproduced.

COMPDOORBRO | EU00714 1s1/Sept23