

axis

Automatic Entrance Systems

STANLEY®

Dura-CareTM

SERIES 7300 TL-FBO ICU/CCU MANUAL SLIDING DOOR



DESIGNED FOR THE UNIQUE NEEDS OF HOSPITAL INTENSIVE CARE AND CRITICAL CARE UNITS

The 7300 TL-FBO is our FGI compliant ICU/CCU manual slide door that provides an industry leading 1118mm clear door opening within a 2438mm wide frame. When the panels are slid to full open and a larger opening width is needed, a flush bolt on the sliding panel can be easily disengaged to allow both panels to swing open. The trackless design provides smooth transportation of patients and equipment.

OPTIONAL FEATURES

- **Smoke and Draft Protection** – Leakage rated and listed under UL1784 and labeled as an effective smoke barrier.
- **Positive/Negative Pressure Environments** – Add concealed sweeps to a leakage rated system for positive/negative pressure applications.
- **Anti-microbial Protection** – Prevents the spread of infections. Available on touch-points or full package.
- **Self Closing** – Integrated concealed system available.

Integrated Closer (optional)
Automatically Closes Door

Flush Bolt
Flush bolt disengages panels
for convenience swing

Positive Latch (optional)
Self-latching

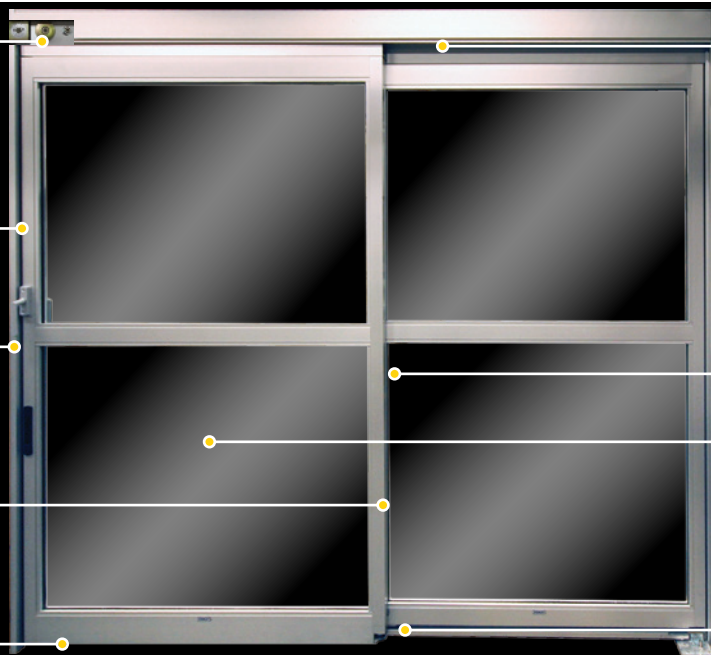
Convenience Swing (Full Break Out)
When sliding panel is completely
open, both panels can break out
for a larger opening

Sweeps (optional)
for positive/negative pressure
environments

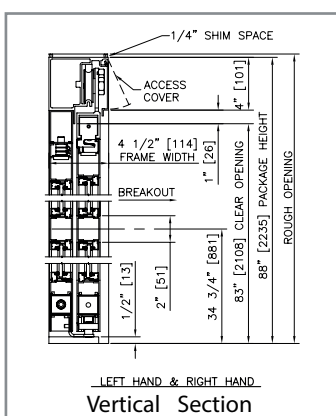
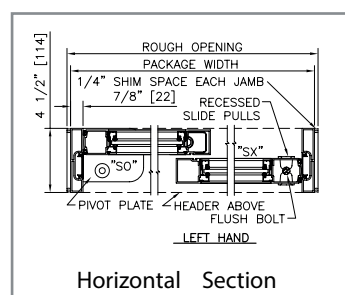
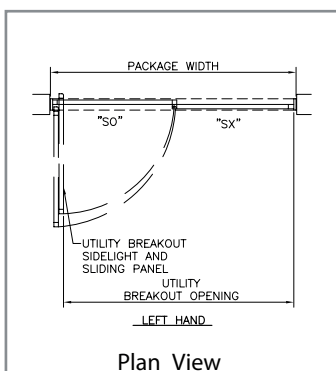
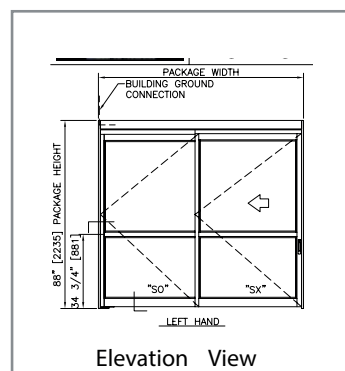
Smoke and Draft Seals (optional)
Leakage rated under UL1784 and
labeled as a smoke barrier

Wide Opening
1118mm (44") clear door
opening with 2438mm (8-foot)
package for patient bed and
equipment transfers without
having to break out the door
panels

Trackless
Trackless design for smooth
and safe patient bed and
equipment transfers



VIEWS



PRODUCT SPECIFICATIONS

Description	Standard Configuration	Options
Header Dimension	4.0" (h) x 4.5" (w)	
Stiles	Narrow (1.75")	
Supporting Glass Size	0.25"	0.50", 0.625", 1.0"
Bottom Rails	4"	6", 8", 10", 12"
Jamb Dimension	4.5" x 0.875"	4.5" x 1.75"
Finish	Clear	Special Finish Available
Package Height	88.0"	Max. Height 92.0"
Width - 2 Panel	96"	Max Width 108"
Clear Door Opening (CDO)	44" at package width of 96"	
High Temperature Gaskets	Included	
Integrated Self-Closer	Optional (only available up to 96.0" wide packages)	
Positive Latch	Optional (standard feature w/Smoke & Draft)	
Listings/ Ratings	UL1784, NFPA 105, +/- Pressure	
+/- Pressure Rating	Max. rating with optional concealed sweeps	
Utility breakout	SO and SX at full open	
Codes	IBC, UL, NFPA, FGI/AIA	
Anti- Microbial Protection	Optional - Touchpoints or full-package	

*For package width greater than 96" or if glass thickness is greater than 0.25", a bottom guide support roller is included for SX panels.

Single Slide Formulas - Narrow Stile
Package Width = 2x Clear Door Opening + 7.6"
Clear Door Opening = 1/2 Package Width - 3.8"
Utility Breakout Width = Clear Door Opening + 3.5"
SX Door Panel Width = 1/2 Package Width + 1.6"
SO Door Panel Width = 1/2 Package Width - 1.3"

TYPICAL PACKAGE DIMENSIONS				
PACKAGE WIDTH	NOMINAL CLEAR DOOR OPENING	SLIDING DOOR NOMINAL WIDTH	SIDELIGHT NOMINAL WIDTH	UTILITY BREAKOUT NOMINAL WIDTH
84" [2134]	38.2" [970]	43.6" [1108]	40.8" [1035]	78.0" [1981]
96" [2438]	44.2" [1122]	49.6" [1260]	46.8" [1187]	90.0" [2286]
108" [2743]	50.2" [1275]	55.6" [1413]	52.8" [1340]	102.0" [2591]

Axis not only offer a range of manual sliding doors, our portfolio also includes a wide range of automatic sliding and swing doors suitable for healthcare or clean room environments as well as ICU and CCU manual doorsets. Please visit our website for further details.



Axis Automatic Entrance Systems Ltd
Unit 6, Queens Park Industrial Estate, Studland Road,
Northampton, NN2 6NA.
Tel: 01604 212500 · Fax 01604 212495
Email: sales@axisautomatic.com
www.axisautomatic.com

